



**Meffert ČR**  
*spol. s r.o.*

**Kreativní svět**



**#SAHARA**

Pouštní krajina jako inspirace  
pro fasádu





# #SAHARA

## DÜNE

P 1020 Universalmörtel



# #SAHARA

## SANDRIPPELN

P 1020 Universalmörtel





# #SAHARA

## STRICHDÜNE

P 1020 Universalmörtel



An aerial, top-down view of a city street. The street is filled with cars, including several yellow taxis. Buildings of various heights and styles line the street. The overall scene is a dense urban environment.

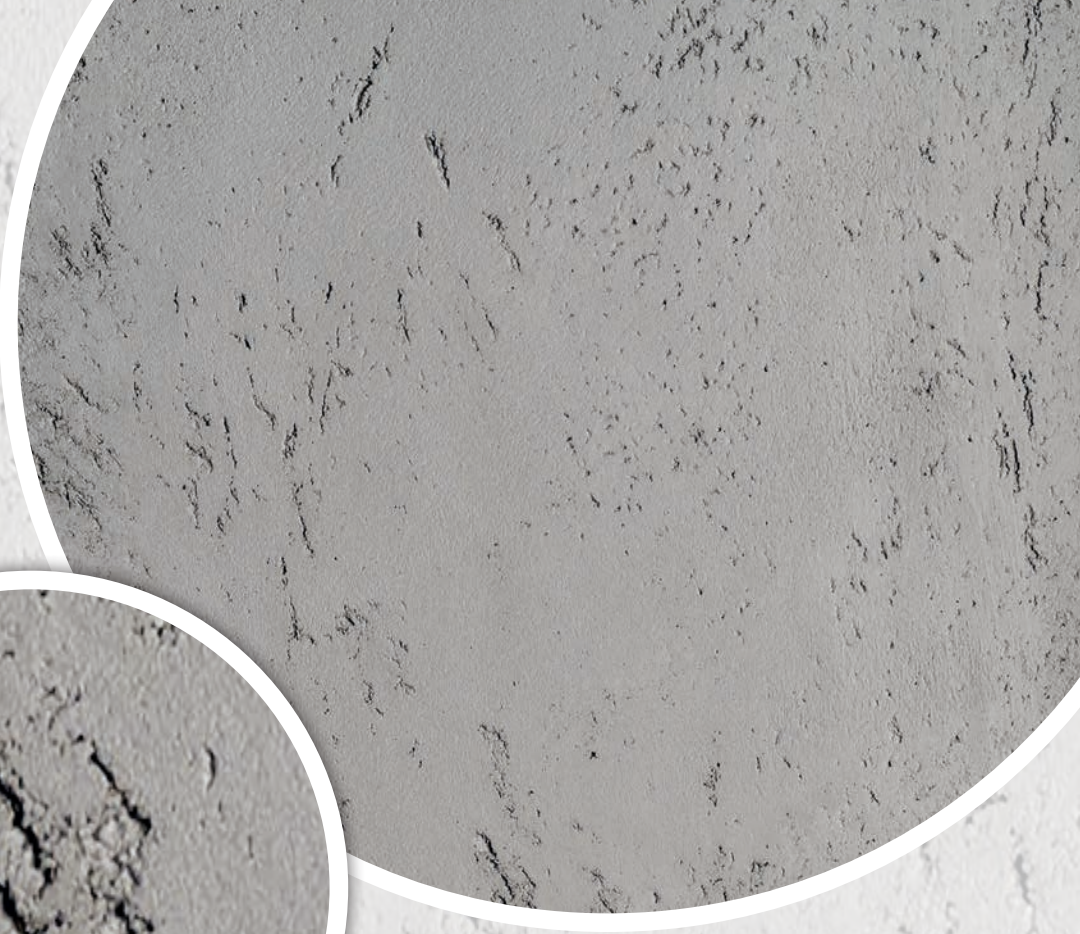
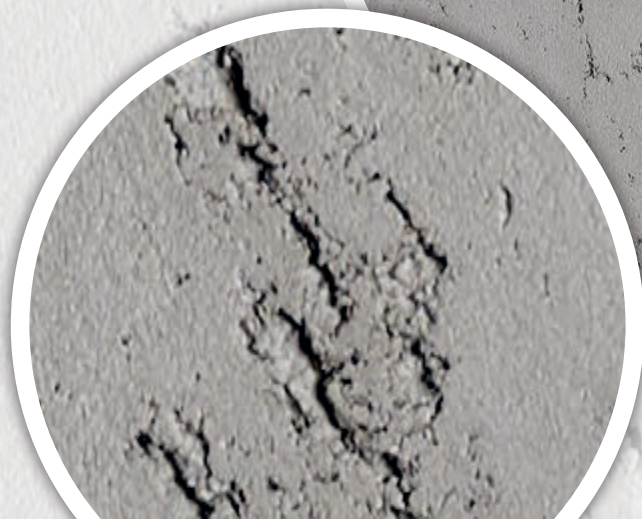
# #MĚSTO

Inspirace pulzujícím velkoměstem,  
průmyslový design fasády



# #MĚSTO REPRO BETON

P 1020 Universalmörtel





# #MĚSTO INDUSTRIE

P 1020 Universalmörtel



A close-up photograph of a tree trunk. The bark is dark brown and deeply textured with vertical ridges and grooves. Patches of bright green moss are growing in the crevices and on the surface of the bark. The lighting is natural, highlighting the texture and color of the bark and moss.

# #ORGANISCH

Přírodní linie,  
silné organické křivky



# #ORGANISCH

## REPRO RINDE

P 1020 Universalmörtel





# #ORGANISCH

## REPRO HOLZ

P 781 Modellier- und Rollputz





A scenic view of a historic city built on a hillside overlooking a river. The architecture is a mix of styles, including red brick buildings with ornate facades and yellow-painted structures. Several buildings feature prominent spires and domes. The sky is a clear, bright blue with light, wispy clouds. The river in the foreground is calm, reflecting the sky and the buildings. A concrete walkway runs along the riverbank, with a few trees and a person walking. In the distance, a tall chimney stack is visible against the horizon.

**#HISTORISCH**

Historické  
řemeslné techniky



# #HISTORISCH

## EDELKRATZPUTZ

### ANNO 1860

P 1705 Edelkratzputz





# #HISTORISCH

## KAMMZUG ANNO 1870

P 1020 Universalmörtel



# #HISTORISCH

## BESENSTRICH ANNO 1880

P 1020 Universalmörtel







# #HISTORISCH

## BESENSTRICH ANNO 1882

P 1702 Mineralputz K



# #HISTORISCH

BESENSTRICH  
ANNO 1888

P 1020 Universalmörtel





A photograph of a modern building's exterior with a light-colored, textured facade. A large window on the left shows a reflection of a red-roofed house. A dark rectangular overlay is centered on the image, containing white text. In the foreground, there are some green and reddish-brown bushes.

# #BASICS

Minerální a organické omítkové  
systémy v různých zrnitostech





# #BASICS

## GEFILZT

P 1020 Universalmörtel



# #BASICS

## KRATZPUTZSTRUKTUR K1







# #BASICS

## KRATZPUTZSTRUKTUR K1,5



# #BASICS

## KRATZPUTZSTRUKTUR K2







# #BASICS

## KRATZPUTZSTRUKTUR K3





# #KLINKERRIEMCHEN

Udržitelný přírodní materiál  
inspirovaný Severním Německem





# #KLINKER- RIEMCHEN

BREMER SCHNOOR



# #KLINKER- RIEMCHEN

KIEL GAARDEN







# #KLINKER- RIEMCHEN

HAMBURG SPEICHERSTADT



# #KLINKER- RIEMCHEN

FEHMARN PUTTGARDEN





A vibrant scene of a canal in Amsterdam. In the foreground, there is a dense field of bright pink tulips. In the background, a row of historic Dutch buildings with various architectural styles, including gabled roofs and ornate facades, lines the canal. The sky is clear and blue.

# #FLACHVERBLENDER

Dekoratívni obklady v holandském stylu.  
Prvek stylu s variabilním tvarem, také v  
kombinaci s omítkovými variantami.



The image features a dark grey brick wall texture. Two circular highlights are overlaid on the left side: a large one at the top and a smaller one below it, both showing a closer view of the bricks and mortar. The background on the right is a light grey, semi-transparent version of the same brick wall texture.

# #FLACHVER- BLENDER

## ROTTERDAM WEST



# #FLACHVER- BLENDER

EINDHOVEN NOORD





The background features a light-colored wood grain texture. Two circular areas with white borders are overlaid on the left side, showing a darker, more detailed wood grain texture. The text is positioned in the upper right quadrant.

# #FLACHVER- BLENDER

REPRO HOLZ